

NEWS FROM THE GLEN

Newsletter of Glen Allen

www.glenallen.org

Bowie, Maryland

Fall 2015

Assessments Up A Little

We have continued our commitment to keep assessments low and we have been successful. You should have noted that the proposed 2016 budget includes a 7% increase in assessments to \$175.00. The Board of Directors continues the practice of careful expenditure of all funds to ensure our neighborhood maintains its quality appearance and established maintenance standards. However, due to the standard rising costs in services provided to maintain the community, it is necessary to impose a small increase. This increase will also help to continue to fund the association's reserve fund for capital expenditures. This increase to the reserve budget was well below the recommended level for a community of our age, but the board felt that since we've not had a huge capital expenditure we didn't need a significant increase in reserves.

Speed Awareness in Glen Allen



As part of the City of Bowie's Driver Safety Program, a speed awareness sign is placed within a community to bring speed awareness to the drivers. Bowie uses two pole mounted speed

awareness signs and one speed awareness trailer. When a driver exceeds the speed limit, the sign notifies with a flashing very bright light and flashing text. These signs do not generate a speeding citation.

DRIVE SAFELY!

Be Aware: Mail Theft

Recently, Procom, Glen Allen's management company, had a call from a resident reporting that mail was stolen from their mailbox. A check waiting to be mailed was altered and cashed. Theft of mail is a federal offense, not to be taken lightly. A few years ago, there was a spate of such thefts around Christmas. They stopped after the holidays. You should be aware that such things have happened and are happening again. Should this happen to you, what should you do about it?

First, call the police. You may use 911 or the non-emergency number 301-352-1200 (preferred). Every incident is different. Depending on the circumstances, the police may conduct the investigation themselves, partner with the Postal Inspector (the U.S. Postal Inspection Service is the law enforcement and security arm of the U.S. Postal Service), or turn the case over to the Postal Inspector entirely. You have the option of contacting the Postal Inspector directly on 301-499-7313 or 301-499-7346, but they are not available 24 hours a day so you may have to wait until business hours to contact them. In any event, the police need to know that these thefts are occurring.

On a similar tack, now is a good time to talk about theft of credit cards or credit card numbers. Should this happen to you, first contact the credit card provider. They may tell you that they will take care of it and issue a new card and number. 'Taking care of it' to a credit card company means eating whatever is charged by the thief. The thief gets away with it; in this case crime DOES pay. To prevent this, after calling the credit card company, call the police. They have a squad dedicated to this type of identity theft. Give them a chance to make sure that crime really DOES NOT pay.

Crime Statistics for Glen Allen & Surroundings

	Sep.	Oct.	Nov.
Homicide	1	0	0
Forcible Rape	0	0	0
Commercial Robbery	0	0	1
Residential Robbery	0	0	0
Citizen Robbery	1	1	0
Carjackings	0	0	0
Assaults	3	7	1
Commercial Burglary	0	0	1
Residential Burglary	3	2	2
Theft from Auto	8	8	2
OtherThefts	25	22	10
Stolen Vehicles	0	1	0

PGPD data for Beat E1.
Nov. Data from 11/1-11/19

Crime Statistics for Glen Allen

	Sep.	Oct.
Accident	1/0	0/0
Break & Enter	0/0	0/0
Check Auto/Person	1/0	0/0
Check Premises	0/0	1/0
Disorderly Conduct	1/0	0/0
Domestic Violence	2/0	0/0
Theft	1/1	0/0
Theft from Auto	2/2	2/1
Vandalism	0/0	0/0
Gunshot/Shooting	0/0	0/0
Other Call Type	1/0	0/0
Burglar Alarm	4/0	9/0
Traffic Citations	0	0

Bowie Police Dept. Data: # Calls / # Reports Written,
Burglar Alarm: # Dispatched / # Reports Written
Nov. not available

Is Soliciting or Peddling Legal?

The answer is yes (with a license) and yes (with a license). The City of Bowie code for Peddler, Solicitor is in section 18. The code is divided into definition, license and exceptions. Part of the definition of peddler, solicitor states: “..any person who goes from house to house to vend, sell, introduce, promote or describe any service , product or thing of value.....” (the definition is a paragraph long). When a person performs those actions that are not stated within the exceptions, they must obtain a license from the City of Bowie.

Exceptions - This code shall not apply to:

- (b) Persons who take orders for or make delivery of newspapers, milk, ice, fuel, bakery goods or other dairy or bakery perishable food products.
- (c) Persons selling such articles as may be produced, caught, or raised by them.
- (d) Persons selling Christmas trees, cards, greens, holly, and wreaths.
- (e) Fraternal, religious, charitable, patriotic, educational, benevolent, or civic organizations approved as such by the City Manager.

If you observe someone peddling or soliciting who should have a license and doesn't, notify the police department.

*Glen Allen's HOA
Board of Directors
meets the second
Tuesday of each
month except
December at 7:00 at
All Saints Lutheran
Church.
Residents are
welcome to attend.*

HOA Contacts

ProCom, Inc.

Adriane DiCamillo 301-261-0777,
X122

HOA Board of Directors

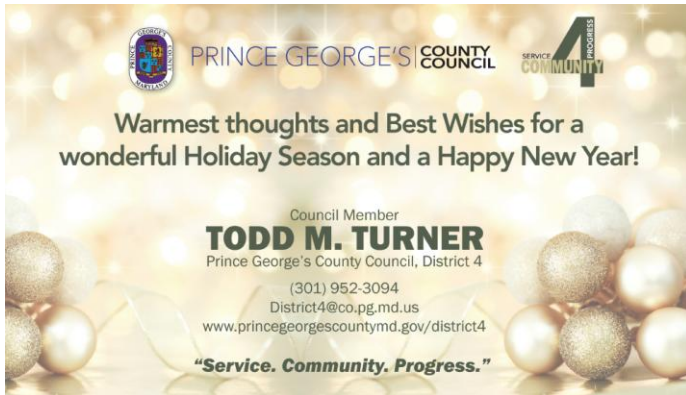
Karen DeFazio, President: 301-249-7463
Charles Brown, Vice President: 301-351-1396
Cary Hithon, Treasurer: 301-218-1956
Al Curley, At-Large: 301-218-1239
Dorothy Morrison, Secretary: 301-390-2841

City Council Member, District 4

Isaac Trough: 301-262-6200

Committees and Chairs

Architectural Review, Charles Brown
Grounds and Maintenance, Joe Brust
Hospitality, Vacant
Neighborhood Watch, Al Curley
Newsletter, Karen and Bob DeFazio
Website: www.glenallen.org



*The next leaf collection for
Glen Allen is December 17*